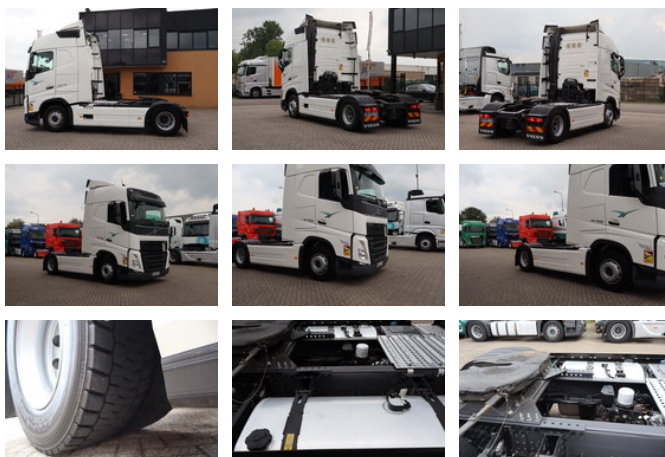


Volvo FH 500 * EURO6 * 4X2 *

Ogólne cechy

Marka	Volvo
model	FH 500
Podkategoria	Ciągniki siodłowe
Przebieg	565.000km
Rok budowy	2023
firstRegistrationDate	17-03-2023
Kolor	Dowcip
Stan	Używane
Ogólny stan	Bardzo dobry
energyType	energyType.diesel
emissionsClass	Euro 6
advertiserObjectReference	4///0/1/2/0



Właściwości

Masa własna	8.301kg
GVW	21.000kg
cabin	Kabina sypialna

Volvo FH 500 * EURO6 * 4X2 *

Specyfikacje techniczne

transmissionType

transmissionType.automatic

power

500

accessories

- 2 pedal control
- Adaptacyjny tempomat
- Android Auto
- Apple CarPlay
- Automatic
- Bluetooth
- Onboard Computer
- Differential Lock
- ESP
- Closed cabin
- Lane Assist
- Air Suspension Seats
- Sunroof
- Spotlight rear
- Spotlight front
- Air conditioning
- Aluminium fuel tank
- Leaf spring suspension
- Central locking
- Roof spoiler
- Twin fuel tank
- Electrically operated windows
- Refrigerator
- Air horn
- Air suspension
- Fog lights
- Radio/cassette player
- Radio/CD player
- Particulate filter
- Side skirts
- Sleeper cab
- Speed limiter
- Stability control
- Vehicle heater
- Heavy duty engine brake
- Visor
- Cabin
- Cruise control
- Catalyst

- Air suspension system
- Disc brakes
- Power steering
- Passenger seat
- Metallic paint
- Radio/Cd/Audio system
- Central doorlocking
- Electric windows
- ABS
- EBS
- Climate control
- Heater
- Alarm
- ASR (Anti-Slip Regulation/Traction Control)